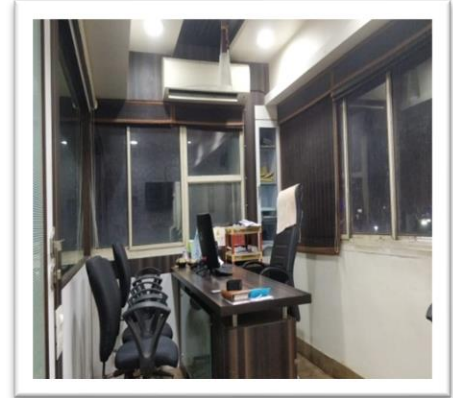


## SEMI AUTOMATIC "ENERGY EFFICIENT" PACKAGED DRINKING WATER PET BOTTLE PRODUCTION LINE



WATER SOLUTION

### COMPANY INTRODUCTION



Today while completing our 16 glorious year of service, we proudly introduce a better organization. Today, we are better because we have much broader market capability and a more diverse work force to address our customer's evolving needs. Dedicated to purification of water and in turn protection of the environment, Unitech has been combining systematically innovative technologies with economic products since last one and half decades.

With over hundreds of projects in almost all possible applications of water treatment in every industry from Power, Chemical / Process, Microelectronics, Pharmaceutical, Biotech, Bottled water to community Water supply projects, we have dedicated our all community water supply projects, we have dedicated our all resources to deliver, cost effective, reliable, industrial pure water solution to our customer everywhere.

In our drive to become a globally recognized service provider; we offer a complete gamut of technologies, manufacturing capabilities, Project management and engineering infrastructure covered under one roof. Water is the very picture of change, flux, and transformation. No two moments are alike. At **Unitech**, we have blended ourselves to these cardinal virtues of water.

To some of you, who are meeting us, for the first time, we say "Thanks you" for letting us make a first impression- One that we hope will convince you beyond any doubt that **Unitech** can be your preferred Water purification supplier.

To those who already know us, we invite you to take a fresh look at who we are today. With a clear focus on water, we are upgrading ourselves with most advanced technologies as a solution oriented company that makes decision based on customer requirements and the latest market needs.

#### Vision

Motivated with the spirit of enterprise, to become a global entity and establish the highest standards in the area of Water Management Business and provide better value to our customers.

#### Mission

Consistently grow by providing products, solutions and services of international standards so as to maintain high level of customer satisfaction and profitability, to enhance share holder value and opportunities to our employees.

#### Values

Spot talent and infuse in them the spirit of Entrepreneurship with performance as a benchmark and foster corporate integrity in the interest of customers, stakeholders and employees, by constantly raising our standards.

### Way of Life

At **Unitech**, we are committed to your satisfaction first. Our activities are guided by the customer's aim and the desire to satisfy customer needs on a long term basis. Engineering, combined with "people skills" means your project is well built and will function as you expect and demand.

While we are happy about our achievements so far, we are also aware there is a lot more to be done. Team Unitech looks forward to achieve new milestones and partner its customers for their growth journey.

Our employees are our greatest asset. They are responsible for discovering, developing innovative solutions to meet our global clientele. In keeping with our policy to invest in future, we strive to establish an environment that invigorates every individual's development.

We foster an ambience that best supports and encourages a close working relationship between every employee. The energy behind UWS is this unique environment that nurtures young talent and aptly nourishes the experienced.

Learning is continuous. We pursue open door policy to offer continuous ventilation to young and old minds, helping us to achieve our objectives. Supported by strong training and performance management program, we have inculcated belief, capabilities and the resources to try new things to challenge conventions to do what it takes to help customer win.

### Our Services

Customer Satisfaction is our primary motive of our company. Some of our specialties, which make us your proffered business partner, are:

- ✓ High standards of quality.
- ✓ Most economical prices.
- ✓ Excellent customer care and after sales service.
- ✓ Understanding individual clients requirements from all parameters and accordingly serving them.

### Customer Satisfaction

We are a customer oriented company and every possible measure is taken to offer complete customer satisfaction.

### Timely Delivery

We are exporting our machinery, have always striven hard for delivery of orders within the time frame and as demanded by our customers. We are able to deliver products on time.

### Our Clients

We serve a wide range of client domestic and international markets. All our clients are satisfied from us which results in excellent rate of repeated orders. With most of our clients, we are doing mutually beneficial since year and this had reaffirmed our faith in making long-lasting relations and not just clients.





**MANUFACTURING PROCESS**



**UNITECH**  
WATER SOLUTION

**RANGE OF PRODUCTS**

Please find below our E-Catalogue for your perusal.

<https://sharedigitalcard.com/UNITECH-WATER-SOLUTION39434>

**Drinking Water Production Line (Capacity: 60 BPM)**

[https://youtu.be/-uyMV\\_s5ogk](https://youtu.be/-uyMV_s5ogk)

**Fully Automatic Packaged Drinking Water Production Line (Capacity: 90 BPM)**

<https://youtu.be/yO2Jbya9Las>

**Automatic 20 Liter Jar Rinsing Filling Capping Machine**

<https://youtu.be/Ufkrm00PBqw> (Capacity: 120 - 150 JPH)

[https://youtu.be/Mt\\_MNW5b54s](https://youtu.be/Mt_MNW5b54s) (Capacity: 400 - 450 JPH)

**Automatic Mineral Water Filling Machine**

[https://youtu.be/X9-0\\_VPmnc](https://youtu.be/X9-0_VPmnc) (Capacity: 40 - 60 BPM)

<https://youtu.be/mDSiAqTAH-Q> (Capacity: 60 - 90 BPM)

<https://youtu.be/gb7IZs-pcFA> (Capacity: 90 - 120 BPM)

**Reverse Osmosis Plant**

<https://youtu.be/2u1PyGLpq68> (Capacity: 12000 LPH)

<https://youtu.be/NOPszzBoZZs> (Capacity: 8000 LPH)

**Semi Automatic Shrink Wrapping Machine**

<https://youtu.be/HiqsVWeBNDI>

**Drinking Water Plant Layout**

<https://youtu.be/abwhErYrbXA>

**STANDARD SEMI AUTOMATIC PACKAGED DRINKING WATER PRODUCTION LINE**

Sr. No.	Description	24 BPM	30 BPM	30 BPM	40 BPM	40 BPM
1	Water Treatment Plant (RO Plant)	2000 LPH	2000 LPH	3000 LPH	3000 LPH	4000 LPH
2	Laboratory (Micro / Chemical)	Mandatory				
3	Automatic Pet Bottle Filling Machine	24 BPM (1400 BPH) Model: 4-4-2	30 BPM (1800 BPH) Model: 6-6-3	30 BPM (1800 BPH) Model: 6-6-3	40 BPM (2400 BPH) Model: 8-8-4	40 BPM (2400 BPH) Model: 8-8-4
4	Semi Automatic Shrink Wrapping Machine	Capacity: 3 - 4 Packs/minute				
5	Semi Automatic Pet Blow Moulding Machine with Auxiliary	Capacity: 1000 - 1200 BPH; Type: Auto Dropping; Cavity: 2 20 HP High Pressure Air Compressor (54 CFM @ 30 Bar) Air Dryer Chiller : 2 Ton				
6	Batch Coding Machine (Digital)	Type: Digital, Linear: 2				
7	Jar Washing Machine	Spec: Jar Inner Washing Machine; Type: Twin Head				
8	<b>Power Requirement</b>	<b>67.5 KW</b>	<b>67.5 KW</b>	<b>70 KW</b>	<b>70 KW</b>	<b>71.5 KW</b>
9	<b>Space Requirement</b>	<b>3500 Sq. Feet</b>	<b>3500 Sq. Feet</b>	<b>3500 Sq. Feet</b>	<b>4000 Sq. Feet</b>	<b>4000 Sq. Feet</b>
10	<b>Cartoon Production Per Shift (8 Hours)</b>	<b>600</b>	<b>750</b>	<b>750</b>	<b>1000</b>	<b>1000</b>
11	<b>Cost of One Box (Pack of 12 Bottles)</b>	<b>RS. 72</b>	<b>RS. 70</b>	<b>RS. 67</b>	<b>RS. 67</b>	<b>RS. 67</b>

**NOTE:**

- We have assumed current preform prices as RS. 154 per Kg.
- We have assumed preform weight of 19.5 gm for 1000 ml & 12.5 gm for 500 ml & 9.0 gm for 250 ml.
- We have assumed Salary of Manpower is RS. 1.0 Lakh – RS. 2.0 Lakh per Month.
- We have assumed current Shrink Roll prices as RS. 190 per Kg.
- We have calculated Interest Cost on sum of RS. 70 Lakh – RS. 1 Cr @ 12% Interest per Annum.
- **Above Bottle Prices are Inclusive of GST**

### ENERGY EFFICIENT SEMI AUTOMATIC PACKAGED DRINKING WATER PRODUCTION LINE

Sr. No.	Description	30 BPM	40 BPM	60 BPM	60 BPM	90 BPM
1	Water Treatment Plant (RO Plant)	2000 LPH	3000 LPH	4000 LPH	5000 LPH	6000 LPH
2	Laboratory (Micro / Chemical)	Mandatory				
3	Automatic Pet Bottle Filling Machine	30 BPM (1800 BPH) Model: 6-6-3	40 BPM (2400 BPH) Model: 8-8-4	60 BPM (3600 BPH) Model: 12-12-6	60 BPM (3600 BPH) Model: 12-12-6	90 BPM (5400 BPH) Model: 18-18-6
4	Semi Automatic Shrink Wrapping Machine	Capacity: 4 - 5 Packs/minute				
5	Semi Automatic Pet Blow Moulding Machine with Auxiliary	Capacity: 1800 BPH; Type: Auto Dropping; Cavity: 2 25 HP High Pressure Air Compressor (70 CFM @ 30 Bar) Air Dryer Chiller : 2 Ton				
6	Batch Coding Machine (Digital)	Type: Digital, Linear: 2				
7	Jar Washing Machine	Spec: Jar Inner Washing Machine; Type: Twin Head				
8	<b>Power Requirement</b>	<b>66.5 KW</b>	<b>68 KW</b>	<b>69 KW</b>	<b>104 KW</b>	<b>108.5 KW</b>
9	<b>Space Requirement</b>	<b>3500</b> Sq. Feet	<b>3500</b> Sq. Feet	<b>4000</b> Sq. Feet	<b>5000</b> Sq. Feet	<b>6000</b> Sq. Feet
10	<b>Cartoon Production Per Shift (8 Hours)</b>	<b>850</b>	<b>1250</b>	<b>1750</b>	<b>2050</b>	<b>2400</b>
11	<b>Cost of One Box (Pack of 12 Bottles)</b>	<b>RS. 67</b>	<b>RS. 64</b>	<b>RS. 61</b>	<b>RS. 59</b>	<b>RS. 56</b>

**NOTE:**

- We have assumed current preform prices as RS. 154 per Kg.
- We have assumed preform weight of 16.5 gm for 1000 ml & 10.5 gm for 500 ml & 6.5 gm for 250 ml.
- We have assumed Salary of Manpower is RS. 1.0 Lakh – RS. 2.0 Lakh per Month.
- We have assumed current Shrink Roll prices as RS. 190 per Kg.
- We have calculated Interest Cost on sum of RS. 1.0 Cr – RS. 2.0 Cr @ 12% Interest per Annum.
- Above Bottle Prices are Inclusive of GST**
- Filling Machine Running Hours: 8
- Blowing Machine Running Hours: 8 - 16
- Bottle Infeed System: Bottle is blown separately and stored first. Then these empty bottles will be manually feed by two persons through Y Conveyor.



E-CATALOGUE

<https://shredigitalcard.com/UNITECH-WATER-SOLUTION39434>

**CORPORATE OFFICE:**

611, MAHAKANT COMPLEX, 6TH FLOOR,  
OPP. V. S. HOSPITAL, NEAR ELLIS-BRIDGE,  
PALDI, AHMEDABAD - 380007 (GUJARAT),  
INDIA

**BRANCH OFFICE**

NEAR LP SCHOOL, SAUKUCHI,  
GUWAHATI – 781040 (ASSAM)

**OVERSEAS OFFICE**

P. O. BOX NO: 32014, LUSAKA, ZAMBIA  
PH NO: +260-977 113323  
EMAIL: technicaljiel@gmail.com

**CONTACT NO**

+91-9227788078 / +91-8866006031 / +91-8200102169

✉ [marketing@unitechwater.co.in](mailto:marketing@unitechwater.co.in) / [unitechwater@hotmail.com](mailto:unitechwater@hotmail.com)

**UNITECH**  
WATER SOLUTION